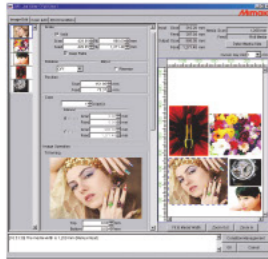


New generation output software with 16 bit rendering (bundled item)



**High performance RIP software designed to fully enable all advanced features of JV33 series printer**



[8 bit rendering]  
Tone jumps are likely to occur

[16 bit rendering]  
Smooth gradation without tone jumps

16 bit rendering eliminates tone jumps and produces fine color reproduction. The web update function helps you to achieve both software update and profile download more easily. White Ink Overlay Printing, Metallic Color Library and among other functions help you to produce higher image quality.

**RasterLink Pro 5 SG**

■Specifications

| Item                        | Specifications  |  |   |                             |
|-----------------------------|---|--|---|-----------------------------|
|                             | JV33-130  | JV33-160                                       | JV33-260  |                             |
| Head                        | On-demand Piezo head (180 nozzles × 8 lines) × 1 head   |  |   |                             |
| Maximum print width         | 1,361 mm (53.5")  | 1,610 mm (63.3")                               | 2,632 mm (103.6")                                 |                             |
| Printing resolution         | 540, 720, 1440 dpi  |  |   |                             |
| Printing mode (scan × feed) | 540 × 720 dpi, 540 × 900 dpi, 540 × 1080 dpi<br>720 × 540 dpi, 720 × 720 dpi, 720 × 1080 dpi, 720 × 1440 dpi<br>1440 × 1440 dpi |  |   |                             |
| Ink                         | Kind  | Exclusive Solvent ink: ES3 ink, SS21 ink       |   |                             |
|                             |   | Exclusive aqueous pigment ink                  |   |                             |
|                             |   | Exclusive dye sublimation ink                  |   |                             |
| Capacity                    | 4-color mode: 440 ml cartridge × 2 / color, 880 ml / color  |  |   |                             |
|                             | 6-color mode: 440 ml cartridge × 1 / color, 440 ml / color  |  |   |                             |
| Media                       | Size  | 1,371 mm (53.9")                               | 1,620 mm (63.9")                                  | 2,642 mm (104.0")           |
|                             | Roll weight   | Less than 25 kg (55.1 lbs.)                    |   | Less than 100 kg (220 lbs.) |
|                             | Print surface   | Face out                                       |   |                             |
|                             | Roll inside diameter  | 2 inch or 3 inch                               |   |                             |
| Media cutting               | Cutting on Y direction by cutter at the head  |  |   |                             |
| Media heater                | Triple stage intelligent heater (Pre / Print / Post)  |  |   |                             |
| Media Take-up device        | Roll take-up device (standard), inside/outside selectable   |  |   |                             |
| Interface                   | USB 2.0   |  |   |                             |
| Applicable standards        | VCCI Class A, FCC Class A, UL 60950-1   |  |   |                             |
|                             | CE Marking (EMC directive, low voltage directive), CB report  |  |   |                             |
| Power                       | AC 100 ~ 120 V ± 10%, AC 220 ~ 240 V ± 10%, 50/60 Hz ± 1 Hz   |  |   |                             |
| Power consumption           | Less than 1,440 VA  |  | Less than 1,440 VA × 2 plugs                      |                             |
| Operation environments      | Usable temperature: 20°C ~ 35°C (64 ~ 95°F), Humidity: 35 ~ 65%RH (No condensation)   |  |   |                             |
| Dimensions (W × D × H)      | 2,289 × 739 × 1,424 mm (90.1" × 29.1" × 56.1")  | 2,538 × 739 × 1,424 mm (99.9" × 29.1" × 56.1") | 3,650 × 1,302 × 1,424 mm (143.7" × 51.3" × 56.1") |                             |
| Weight                      | 145 kg (320 lbs.)   | 160 kg (353 lbs.)                              | 450 kg (992 lbs.)                                 |                             |

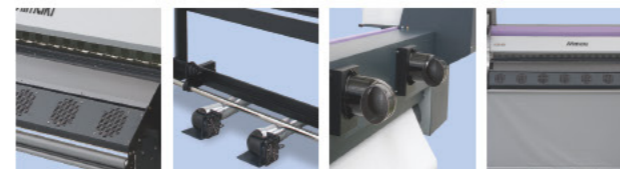
■Supplies

| Item                       | Item No   |
|----------------------------|---|
| SS21 Solvent ink           | 440 ml SPPC-0501 C/M/Y/K/Lc/Lm                    |
|                            | 220 ml SPC-0504W-2                                |
| ES3 Eco solvent ink        | 2liters* SPC-0588 C/M/Y/K/Lc/Lm                   |
|                            | 440 ml SPC-0440 C/M/Y/K/Lc/Lm                     |
| Aqueous pigment ink        | 220 ml SPC-0433W-E                                |
|                            | 220 ml SPC-0433S-E                                |
| Sb52 dye sublimation ink** | 220 ml SPC-0494 C/M/Y/K/Lc/Lm                     |
|                            | 440 ml SPC-0584 NK/K/RK/NRK/BB/LBB/BLM/Y/LBL/LM   |
| Wiper kit 33S              | 2liters* SPC-0585 NK/K/RK/NRK/BB/LBB/BLM/Y/LBL/LM |
|                            | 10 pcs SPA-0134                                   |
| Waste ink bottle (2L)      | 1 pc SPA-0117                                     |
| Cutter blade assy          | 1 pc SPA-0107                                     |
| MS cleaning cartridge      | 220 ml SPC-0294                                   |
| Head cleaning cartridge    | 220 ml SPC-0188S                                  |

\* 2 liter ink packs can be used with the bulk ink system.  
\*\* Sb52 ink has 4 types of black ink: Normal black(NK), Deep black(K), Reddish black(RK) and Normal Reddish black(NRK).

■Option

| Item                                  | Item No                |
|---------------------------------------|------------------------|
| MBIS (Mimaki Bulk Ink System)         | JV33-130/160 OPT-J0305 |
|                                       | JV33-260 OPT-J0308     |
| Drying and exhaust unit 130           | JV33-130 OPT-J0129     |
| Drying and exhaust unit 160           | JV33-160 OPT-J0130     |
| Drying fan unit 260                   | JV33-260 OPT-J0205     |
| Rear fan unit 260                     | JV33-260 OPT-J0206     |
| LED unit 260 for double sided prints  | JV33-260 OPT-J0207     |
| Static-cling prevention sheet kit 260 | JV33-260 OPT-J0209     |



1. Drying fan 2. Exhaust fans 3. Rear fans 4. Exhaust curtain  
"Drying and exhaust unit" includes all of 1, 2, 3 and 4.

●Some of the samples in this catalogue are artificial renderings. ●Specifications, design and dimensions stated in this catalogue may be subject to change without notice (for technical improvements, etc). ●The corporate names and merchandise names written on this catalogue are the trademark or registered trademark of the respective corporations. ●Inkjet printers print using extremely fine dots, so colors may vary slightly after replacement of the printing heads. Also note that if using multiple printer units, colors could vary slightly from one unit to other unit due to slight individual differences.

**MIMAKI ENGINEERING CO., LTD.**  
2182-3 Shigeno-otsu, Tomi-city, Nagano 389-0512, Japan  
Tel: +81-268-78-2288  
trading@mimaki.jp www.mimaki.co.jp

**MIMAKI USA, INC.**  
150 Sateelite Boulevard, suite A, Suwanee, Georgia 30024, U.S.A  
Atlanta +1-888-530-3988 Boston +1-888-530-3986  
Los Angeles +1-888-530-3987 Chicago +1-888-530-3985  
www.mimakiusa.com

**MIMAKI EUROPE B.V.**  
Stammerdijk 7E,  
1112 AA Diemen, The Netherlands  
Tel: +31-20-4627-640  
www.mimakieurope.com

printed in Japan DB10289-05

Wide Format Inkjet Printer

**JV33 Series**  
JV33-130 / JV33-160 / JV33-260

**Mimaki**

**Being Beautiful Is Not Enough.**  
High Quality & High Speed. Ultimate Cost Performance Achieved By JV33 Series.



**Silver Ink**  
Eye-catching metallic effects!



Maximum Printing Width  
1,361 mm (53.5")  
**JV33-130**

Maximum Printing Width  
1,610 mm (63.9")  
**JV33-160**

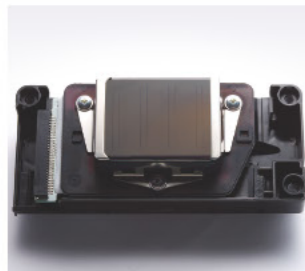
Maximum Printing Width  
2,632 mm (104.0")  
**JV33-260**

# Evolution. JV33 Series

**State-of-the art inkjet technology makes enhanced high quality / high speed performance a reality. Introducing an affordable, high performance, multifunction, solvent inkjet printer.**

Overcoming the previously held misconceptions about solvent inkjet printers, the JV3 series has achieved enormous popularity ever since its release. Following in the footsteps of this revolutionary machine, the JV33 series was created. In addition to various enhancements which bring out a high quality print of 1440 dpi, the new JV33 series has increased print speed. With its goal to achieve ultimate cost performance, Mimaki's flagship product has established high standards which set it apart from the competition.

## Unique inkjet technology makes ultra-high resolution and high-speed printing possible



### Compatible with high resolution and high speed Newly developed high-speed print head

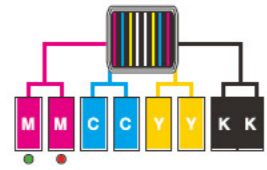
A newly developed high-speed print head containing 180 nozzles x 8 lines, allows for ease of assembly and calibration. With its increased print head accuracy the JV33 delivers truly high quality print of 1440 dpi. In addition, the improved ink-firing frequency has improved the print speed by 30% over the JV3 series. Print quality in 4-color bi-directional mode is also improved using a "symmetric ink arrangement".

### Print speed

| Model    | Color   | High speed mode<br>540 x 720 dpi 4 pass<br>Bidirectional |            | Standard mode<br>540 x 1080 dpi 6 pass<br>Bidirectional |            | High quality mode<br>720 x 1440 dpi 8 pass<br>Bidirectional |            |
|----------|---------|--|------------|---|------------|---|------------|
|          |         | Passes   | Time (min) | Passes  | Time (min) | Passes  | Time (min) |
| JV33-260 | 4 color | 4 pass   | 18.3       | 6 pass  | 12.7       | 8 pass  | 7.7        |
|          | 6 color | 8 pass   | 9.7        | 12 pass   | 6.6        | 16 pass   | 3.6        |
| JV33-160 | 4 color | 4 pass   | 17.5       | 6 pass  | 11.9       | 8 pass  | 7.4        |
|          | 6 color | 8 pass   | 9.0        | 12 pass   | 6.1        | 16 pass   | 3.4        |
| JV33-130 | 4 color | 4 pass   | 16.7       | 6 pass  | 11.4       | 8 pass  | 7.1        |
|          | 6 color | 8 pass   | 8.6        | 12 pass   | 5.8        | 16 pass   | 3.2        |

(unit : m<sup>2</sup>/hour)

## The new UISS improves operating performance by allowing continuous unattended printing



In case of Magenta / A red light is displayed when a cartridge is out of ink the machine switches automatically to a new cartridge.

### Automatic ink cartridge switching allows for longer print runs UISS (Uninterrupted Ink Supply System)

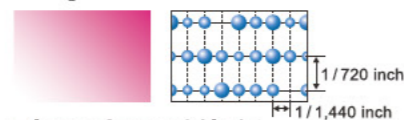
UISS for continuous printing is standard on JV33 machines. The JV33 can utilize two cartridges per color in 4-color mode. When the ink cartridge runs out, another cartridge begins supplying ink and helps prevent running out of ink. A maximum of 880 ml ink per color can be loaded at one time. With 880 ml of ink loaded at one time, a 50 m (54 yd) roll of media can be printed without interruption. Ink cartridges can be changed during printing.

\*UISS can not be used in 6-color mode.

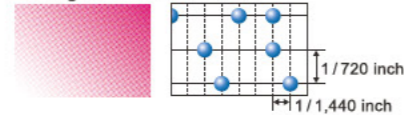
## Creative inkjet technology and high quality ink provides ultra-high resolution printing



### Image of variable dot

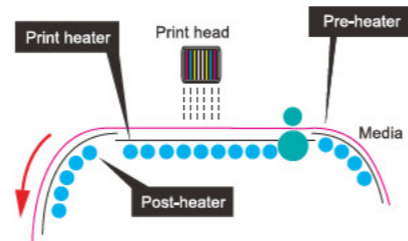


### Image of non-variable dot



### 4-color mode realizes non-grainy finish Variable dot technology

By producing dots in three different sizes, smooth high resolution graphics are created without a grainy appearance. Even at high speed and in low resolution mode high quality printing is possible.



### Ink performance is improved Triple stage intelligent heater

A triple stage intelligent heater automatically heats up the media to the appropriate temperature, thus improving the performance of ink. A newly mounted Post-heater quickens drying time and thus enables a fast take-up of the media.

### Create ultra-high resolution print Piezo inkjet system

Precise control of ink firing reproduces details of photo image at a maximum resolution of 1440 dpi. Even edges of 4-point text are printed sharp and clear.

## A variety of inks, including white and silver, enables you to create a wider range of graphics

### From user-friendly solvent inks to aqueous inks Four types of inks available

The two solvent inks feature high scratch resistance, high density, wide color gamut and high safety (Cyclohexanon-free). You may also select aqueous pigment ink or dye sublimation ink at the time of installation.

| Aqueous ink  | Solvent ink   |
|--|---|
| <b>Pigment ink</b><br>Ink which has high light fastness and can reproduce vivid and delicate color tones.        | <b>SS21 solvent ink</b><br>Fast drying ink provides the ability of printing on various types of media with high scratch resistance. |
| <b>Dye Sublimation ink</b><br>Fast drying and high density ink for sublimation transfer to polyester substrates. | <b>ES3 eco-solvent ink</b><br>Virtually odorless and user-friendly ink that does not require any special ventilation.               |



### More vivid full color printing White ink

Mimaki's unique "White Ink Overlay Print" enables simultaneous printing of colors and white ink. When printing on transparent substrates, white ink underprinting enables printing of more vivid images.

### Stunning metallic effects Silver ink

Shining silver color gives your prints a metallic appearance. In combination with standard full colors, gold and bronze and other metallic effects can be printed.

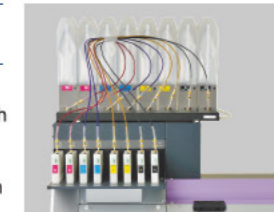
Silver ink is used in 8 color mode only.



## Additional features and benefits to improve operation performance

### High volumes and lower ink costs MBIS (Mimaki Bulk Ink System)

The bulk ink system using ink packs of aluminum achieves as stable and reliable ink ejection as printing solely with cartridges. It is possible to use both 2-liter ink packs in combination with regular 220/440 ml cartridges for colors that are not so often used. In-end detection function to prevent misprints without ink is also available. The bulk ink system is an eco-friendly ink system that produces less waste while achieving continuous printing.



MBIS for JV33-260

### Stable print quality Head height adjustment

Head height can be adjusted to either 2 mm or 3 mm according to the media thickness. For the aqueous ink model, head height adjustment of either 4 mm or 5 mm\* is available.

\* adjustment by technician is required.

## JV33-260 new functions to maximize printing potential

### New function to revolutionize billboard signs Double sided printing

Images on billboard signs are usually dark under daylight because they are printed twice. However, by printing both sides of banner, it is possible to create brighter and more vivid images in any lighting condition.



### Stable feeding of various heavy media Automatic media feeder

The feeding and take-up device can securely feed heavy media with a maximum width of 2.6 m (103"). Heavy media up to 100 kg (220 lbs.) can be fed with constant tension by means of the tension bar and the winding device. For less wide and lighter media, a standard take-up device is also available.

